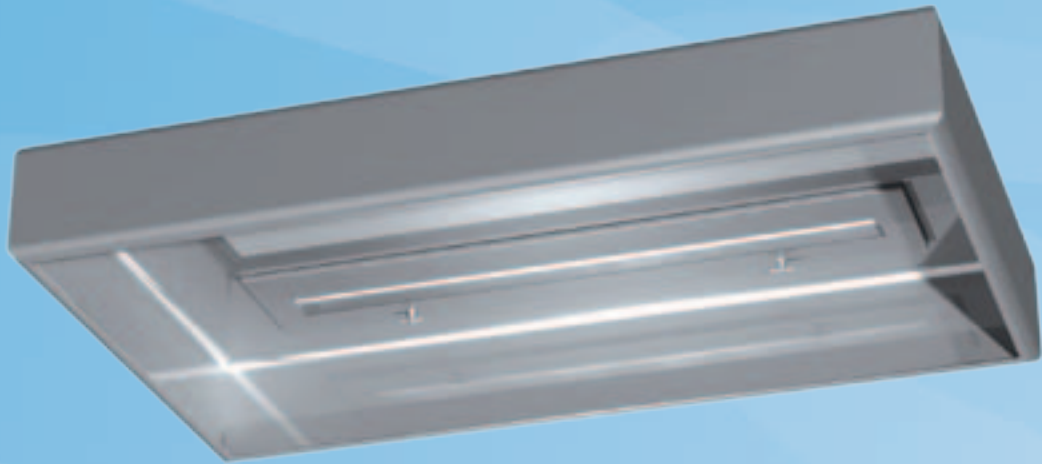


KVM

Steam Extraction Canopy

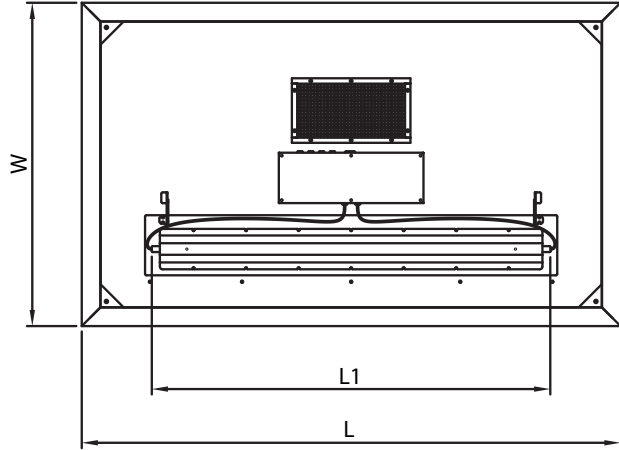
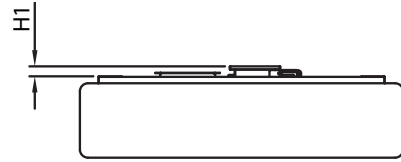
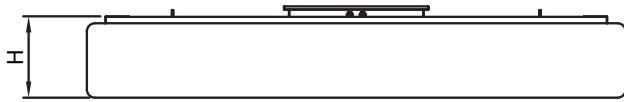


The Halton Marine KVM canopies that are manufactured according to USPHS requirements are an addition to the Halton Marine Galley ventilation requirement. The KVM steam extraction canopies are used to capture and remove steam resulting e.g. of the industrial dishwashers and bain-maries. The KVM canopies are the choice when grease filtration is not required.

- High level of hygiene facilitated
- Supplied as standard with lighting
- Stainless steel (AISI 304), welded construction

PART	MATERIAL	THICKNESS	NOTE
Main body	Stainless steel AISI 304	1,25 mm	AISI 316 available as an option
Light fixture	Stainless steel	-	-
Cables	Halogen free	-	-

GENERAL KVM DRAWINGS



KVM Dimensions	
L	600...3000 mm
W	600...3000 mm
H	150...600 mm
H1	40 mm
L1	24W = 580 mm
L1	95W = 1180 mm
L1	120W = 1480 mm

Note: Maintenance / light fixture hatch is as big as the construction allows.

The dimensions presented above are for modular sections only. Larger canopies are assembled using a combination of separate module vane, which makes transportation and on-site handling easier.

KVM CONSTRUCTION

The parts of the KVM canopy are manufactured from polished stainless steel AISI 304. The joints on the lower edge of the canopy are fully welded.

Connections

Amount, location and sizes of exhaust connections are defined by the customer. Both square and circular connections in various sizes can be done. Connection includes a net hatch.

Weights of standard KVM canopies

Weights of KVM canopies, kg					
B/L	1000	1500	2000	2500	3000
1000	32	40	49	57	66
1500	40	51	62	73	84
2000	49	62	75	89	102

The above table represents an indication of different size of KVM canopies. Height of the canopy is 300 mm.

PRODUCT OPTIONS AND ACCESSORIES

- Material AISI 316
- Special light fixtures according to customers needs
- DSH droplet separator in a ductwork

SUGGESTED SPECIFICATIONS

General

The galley steam canopies shall be constructed from stainless steel AISI 304, material thickness 1,25 mm. The galley canopies shall be supplied complete with outer casing / main body, fluorescent light fitting and exhaust collar with net hatch. The manufacturing of all galley canopies shall be controlled by an ISO 9001 registered quality system.

Outer casing / main body

Outer casing panels shall be constructed of stainless steel sheet AISI 304 with a polished finish. Each joint shall be welded. The joint of the edges shall be fully welded.

Spigot connections

The spigot connections for exhaust air shall be constructed from stainless steel AISI 304 and shall be supplied with a net hatch.

Fluorescent light fixtures

Each canopy shall be delivered with a fluorescent light fixtures providing an average illuminance of minimum 250 lux at the work surfaces of the cooking appliances. The light fixtures shall be suitable for a single-phase 230-VAC power supply and shall be manufactured to be of protection class IP64.

The ballast and capacitor shall be located within the hood junction box. The core electric cables connecting the light fixture to the junction box shall be provided.

The light fixture shall be installed on a hinged maintenance hatch, allowing access to the hood roof.

Light fixture sizes

Canopy dimension	Length
L < 1350 mm, 2x24 W	580 mm
L ≥ 1350 mm, < 1900 mm, 1x95 W	1180 mm
L ≥ 1900 mm, 1x120 W	1480 mm

The canopy has 2x12 W, 1x95 W or 1x120 W fluorescent tubes in a low-profile lighting fixture (IP64), depending on the dimensions of the canopy.

Maintenance hatch

Each canopy shall be provided with a maintenance hatch made of stainless steel AISI 304 with a shock-resistant plastic window. The heat tolerance of the window shall be up to +220 °C. The hatch shall be easily opened and closed with USPHS thumb screws. The maintenance / light fixture hatch is as big as the construction allows.

